

EBM Calculator for Pocket PC installation instructions

Disclaimer:

EBM Calculator for Pocket is created for your own personal use and testing purposes. EBM Calculator for Pocket PC is to be used as a guide only. Medical decisions should NOT be based solely on the results of this program. Although this program has been tested thoroughly, the accuracy of the information cannot be guaranteed.

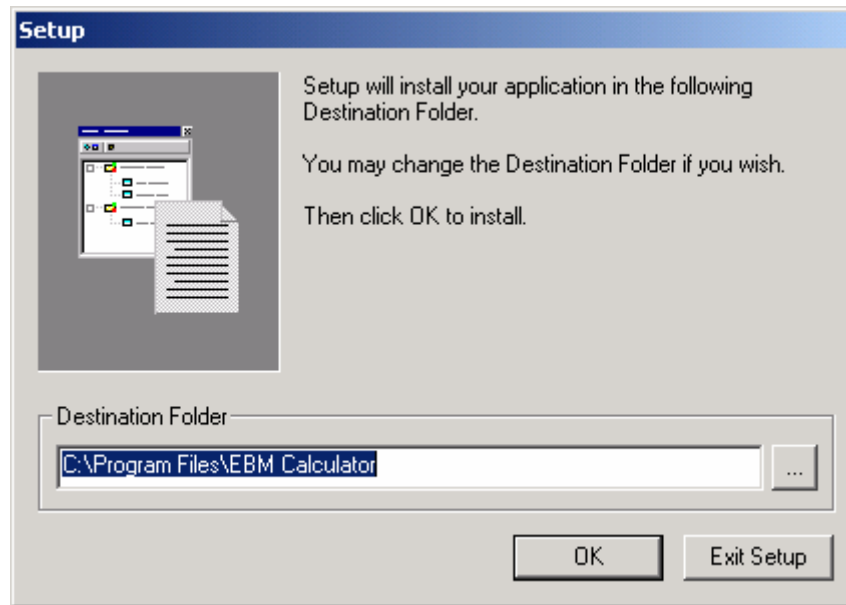
The developer(s) of EBM Calculator is not responsible for any decisions that are made by the results of this program.

Please Read Before Installing EBM Calculator for Pocket PC:

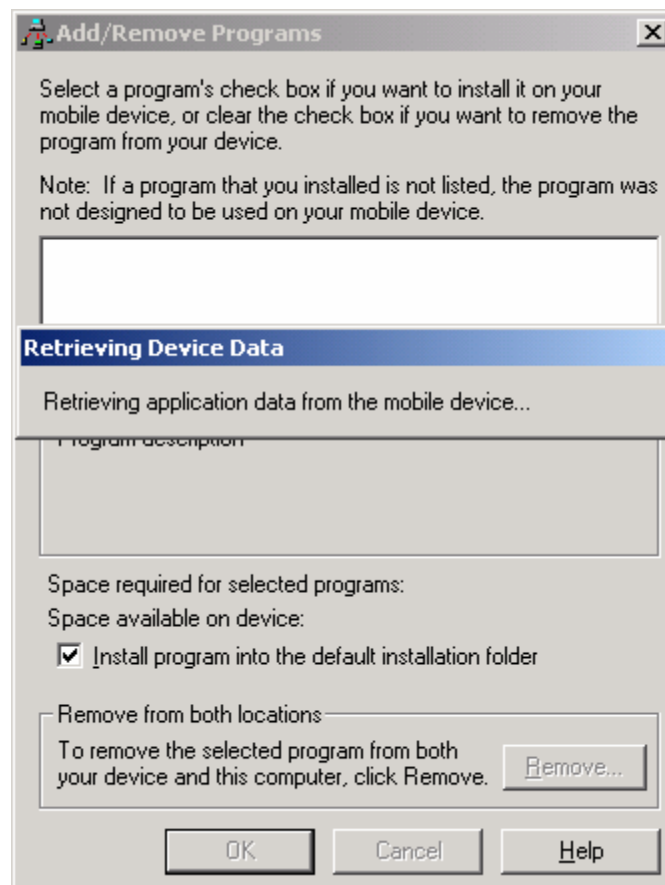
EBM Calculator for Pocket is a Freeware program. It has been tested using IPAQ 3850/3870 on Pocket PC 2002 using 'Strong Arm' processor. This program is provided 'As Is' and we will not be responsible for any problems that it may cause after the installation of the program.

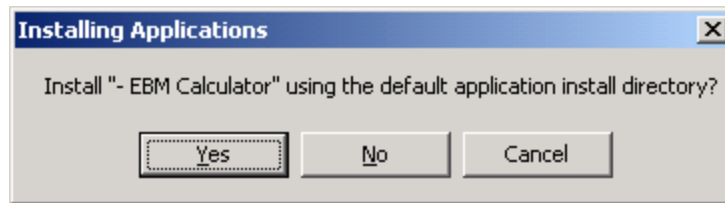
Installation Instructions for EBM Calculator – Pocket PC 2002

1. unzip the file ebmcaltc_ppc_v1_02.zip to a folder
2. click start > run
3. browse to the folder you unzipped the ebmcaltc_ppc_v1_02.zip file
4. click on the 'setup' file
5. click open
6. click ok
7. setup will guide you through the installation process, you will see something like the image below

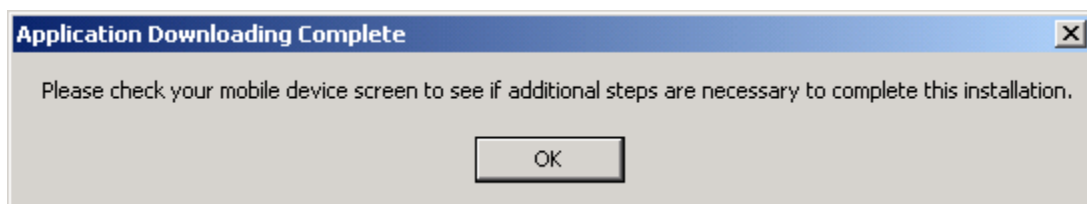
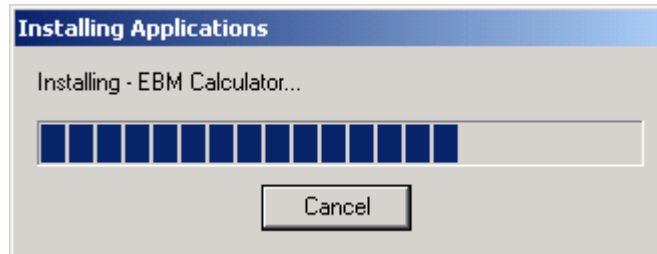


8. click 'OK'





9. click 'Yes'



10. Now check your Pocket PC, if you see a popup window:

“Confirm File Replace”

Would you like to replace the existing file “\Windows\pvbload.exe” modified on ‘date’
with this one?
modified on ‘date’

TAP 'Yes To All' on your Pocket PC

11. once the program is installed, it will be in the 'Programs' folder

12. you will see the an icon like the one below:

